

©2022 Hangzhou Hikvision Digital Technology Co., Ltd. All rights reserved.

About this Manual

The Manual includes instructions for using and managing the Product. Pictures, charts, images and all other information hereinafter are for description and explanation only. The information contained in the Manual is subject to change, without notice, due to firmware updates or other reasons. Please find the latest version of this Manual at the Hikvision website (<https://www.hikvision.com/>).

Please use this Manual with the guidance and assistance of professionals trained in supporting the Product.

HIKVISION and other Hikvision's trademarks and logos are the properties of Hikvision in various jurisdictions. Other trademarks and logos mentioned are the properties of their respective owners.

Disclaimer

TO THE MAXIMUM EXTENT PERMITTED BY APPLICABLE LAW, THIS MANUAL AND THE PRODUCT DESCRIBED, WITH ITS HARDWARE, SOFTWARE AND FIRMWARE, ARE PROVIDED "AS IS" AND "WITH ALL FAULTS AND ERRORS". HIKVISION MAKES NO WARRANTIES, EXPRESS OR IMPLIED, INCLUDING WITHOUT LIMITATION, MERCHANTABILITY, SATISFACTORY QUALITY, OR FITNESS FOR A PARTICULAR PURPOSE. THE USE OF THE PRODUCT BY YOU IS AT YOUR OWN RISK. IN NO EVENT WILL HIKVISION BE LIABLE TO YOU FOR ANY SPECIAL, CONSEQUENTIAL, INCIDENTAL, OR INDIRECT DAMAGES, INCLUDING, AMONG OTHERS, DAMAGES FOR LOSS OF BUSINESS PROFITS, BUSINESS INTERRUPTION, OR LOSS OF DATA, CORRUPTION OF SYSTEMS, OR LOSS OF DOCUMENTATION, WHETHER BASED ON BREACH OF CONTRACT, TORT (INCLUDING NEGLIGENCE), PRODUCT LIABILITY, OR OTHERWISE, IN CONNECTION WITH THE USE OF THE PRODUCT, EVEN IF HIKVISION HAS BEEN ADVISED OF THE POSSIBILITY OF SUCH DAMAGES OR LOSS.

YOU ACKNOWLEDGE THAT THE NATURE OF INTERNET PROVIDES FOR INHERENT SECURITY RISKS, AND HIKVISION SHALL NOT TAKE ANY RESPONSIBILITIES FOR ABNORMAL OPERATION, PRIVACY LEAKAGE OR OTHER DAMAGES RESULTING FROM CYBER-ATTACK, HACKER ATTACK, VIRUS INSPECTION, OR OTHER INTERNET SECURITY RISKS; HOWEVER, HIKVISION WILL PROVIDE TIMELY TECHNICAL SUPPORT IF REQUIRED.

YOU AGREE TO USE THIS PRODUCT IN COMPLIANCE WITH ALL APPLICABLE LAWS, AND YOU ARE SOLELY RESPONSIBLE FOR ENSURING THAT YOUR USE CONFORMS TO THE APPLICABLE LAW. ESPECIALLY, YOU ARE RESPONSIBLE, FOR USING THIS PRODUCT IN A MANNER THAT DOES NOT INFRINGE ON THE RIGHTS OF THIRD PARTIES, INCLUDING WITHOUT LIMITATION, RIGHTS OF PUBLICITY, INTELLECTUAL PROPERTY RIGHTS, OR DATA PROTECTION AND OTHER PRIVACY RIGHTS. YOU SHALL NOT USE THIS PRODUCT FOR ANY PROHIBITED END-USES, INCLUDING THE DEVELOPMENT OR PRODUCTION OF WEAPONS OF MASS DESTRUCTION, THE DEVELOPMENT OR PRODUCTION OF CHEMICAL OR BIOLOGICAL WEAPONS, ANY ACTIVITIES IN THE CONTEXT RELATED TO ANY NUCLEAR EXPLOSIVE OR UNSAFE NUCLEAR FUEL-CYCLE, OR IN SUPPORT OF HUMAN RIGHTS ABUSES.

IN THE EVENT OF ANY CONFLICTS BETWEEN THIS MANUAL AND THE APPLICABLE LAW, THE LATER PREVAILS.



This product and - if applicable - the supplied accessories too are marked with "CE" and comply therefore with the applicable harmonized European standards listed under the EMC Directive 2014/30/EU, RE Directive 2014/53/EU, the RoHS Directive 2011/65/EU.



replacement of a battery with an incorrect type that can defeat a safeguard (for example, in the case of some lithium battery types);
 - disposal of a battery into fire or a hot oven, or mechanically crushing or cutting of a battery, that can result in an explosion;
 - leaving a battery in an extremely high temperature surrounding environment that can result in an explosion or the leakage of flammable liquid or gas; and
 - a battery subjected to extremely low air pressure that may result in an explosion or the leakage of flammable liquid or gas



2012/19/EU (WEEE directive): Products marked with this symbol cannot be disposed of as unsorted municipal waste in the European Union. For proper recycling, return this product to your local supplier upon the purchase of equivalent new equipment, or dispose of it at designated collection points. For more information see: www.recyclethis.info



2006/66/EC (battery directive): This product contains a battery that cannot be disposed of as unsorted municipal waste in the European Union. See the product documentation for specific battery information. The battery is marked with this symbol, which may include lettering to indicate cadmium (Cd), lead (Pb), or mercury (Hg). For proper recycling, return the battery to your supplier or to a designated collection point. For more information see: www.recyclethis.info



Warning

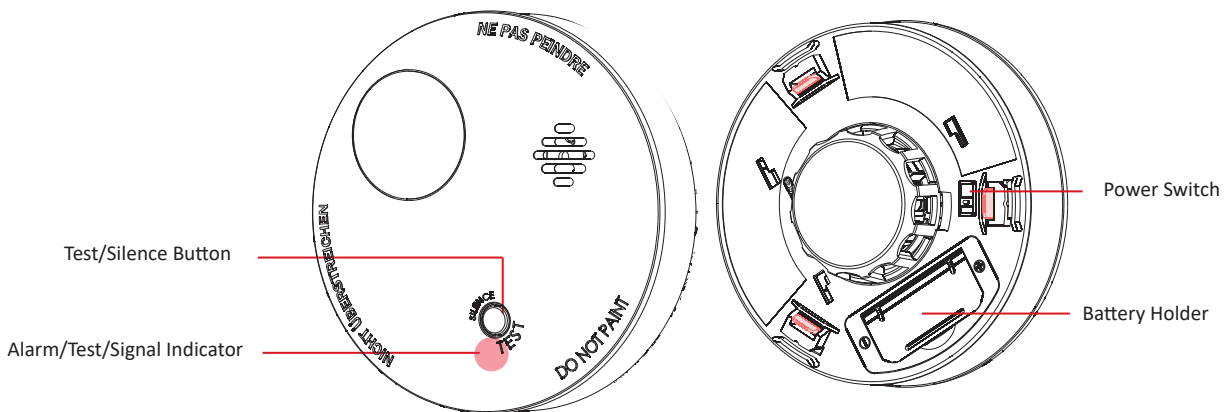
1. Do not ingest battery, Chemical Burn Hazard
2. Keep new and used batteries away from the children.
3. If the battery compartment does not close securely, stop using the product and keep it away from children.
4. This product contains a coin / button cell battery. If the coin / button cell battery is swallowed, it can cause severe internal burns in just 2 hours and lead to death.
5. If you think batteries might have been swallowed or placed inside any part of the body, seek immediate medical attention.



Caution

1. Risk of fire or explosion if the battery is replaced by an incorrect type.
2. Improper replacement of the battery with an incorrect type may defeat a safeguard (for example, in the case of some lithium battery types).
3. Do not dispose of the battery into fire or a hot oven, or mechanically crush or cut the battery, which may result in an explosion.
4. Do not leave the battery in an extremely high temperature surrounding environment, which may result in an explosion or the leakage of flammable liquid or gas.
5. Do not subject the battery to extremely low air pressure, which may result in an explosion or the leakage of flammable liquid or gas.
6. Dispose of used batteries according to the instructions

1 Appearance



Battery + - Mark

- + identifies the positive terminal(s) of equipment which is used with, or generates direct current.
- identifies the negative terminal(s) of equipment which is used with, or generates direct current.

2 Enrollment

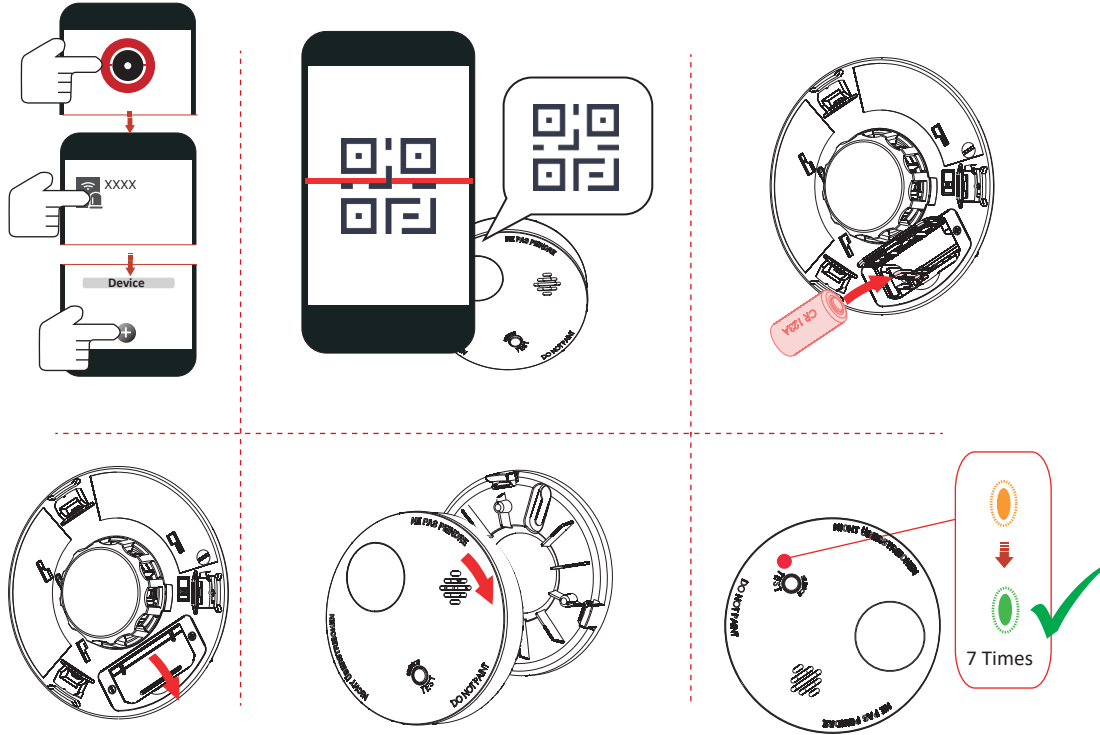
1. Download and install the App from the APP Store.
2. Power on the security control panel.
3. Log in the APP and tap the icon "+" . Scan the QR code or input the control panel serial No. to add the control panel.

1 Enroll the Peripheral Locally

1. In the APP, tap the "Enrollment Mode" button on the control panel page to make the control panel enter the enrollment status.
2. Remove the rear panel, install the battery, and turn clockwise to install the front panel back.
3. Power on the peripheral, and it will be automatically enrolled to the control panel.

2 Enroll the Peripheral with QR and serial No.

1. In the APP, tap the icon "+" and scan the QR code or serial No. on the peripheral.
2. Remove the rear panel, install the battery, and turn clockwise to install the front panel back.
3. Power on the peripheral, and it will be automatically enrolled to the control panel.

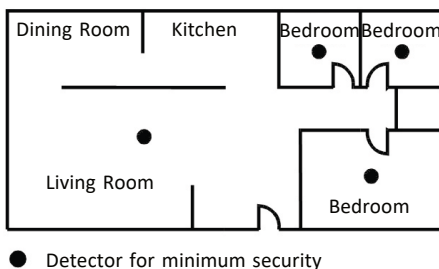


3 Installation Locations

Locations To Install Detectors

Smoke detectors should be installed in accordance with the NFPA Standard 72 (National Fire Protection Association, Battery march Park, Quincy, MA 02169). For complete coverage in residential units, smoke detectors should be installed in all rooms, halls, storage areas, basements, and attics in each family living unit. Minimum coverage is one detector on each floor and one in each sleeping area.

- Install one separate smoke detector in every bedroom and one smoke detector in the floor as a minimum protection. Install a separate smoke detector in each separate room and exit way except kitchen, as shown in Figure 1 and Figure 2.
- Install a smoke detector on every floor of a multi-floor home or apartment, as shown in Figure 3.
- Install a minimum of two detectors in any household.
- Install a smoke detector inside every bedroom.
- Install smoke detectors at both ends of a bedroom hallway if the hallway is more than 40 feet (12 meters) long.
- Install basement smoke detector at the bottom of the basement stairwell.
- Install second-floor smoke detectors at the top of the first-to-second floor stairwell.



● Detector for minimum security

Figure 1 One separate smoke detector in every bedroom and one smoke detector in the floor for minimum security.

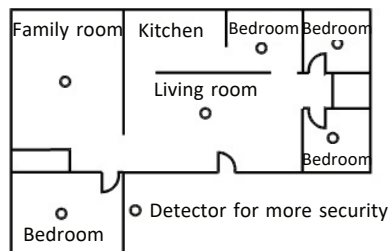
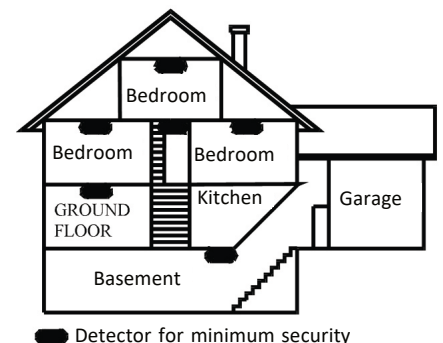


Figure 2 One separate smoke detector in every room, except kitchen for more security.



● Detector for minimum security

Figure 3 Location for placing smoke detector for a multi-floor residence

- Install additional smoke detectors in your living room, dining room, family room, attic, utility and storage rooms.
- Install smoke detectors as close to the center of the ceiling as possible. If this is not practical, put the detector on the ceiling, no closer than 20 inches (50 cm) from any wall or corner, as shown in Figure 4.
- If ceiling mounting is not possible and wall mounting is permitted by your local and state codes, put wall-mounted detectors between 4 and 6 inches (10 ~ 15 cm) from the ceiling, also see Figure 4.
- If some of your rooms have sloped, peaked, or gabled ceilings. The distance between the peak and the mounting point of the smoke detector on peaked ceilings (>20°) is minimum 0.5 m to maximum 1 m measured along the peaked ceiling as shown in Figure 5.

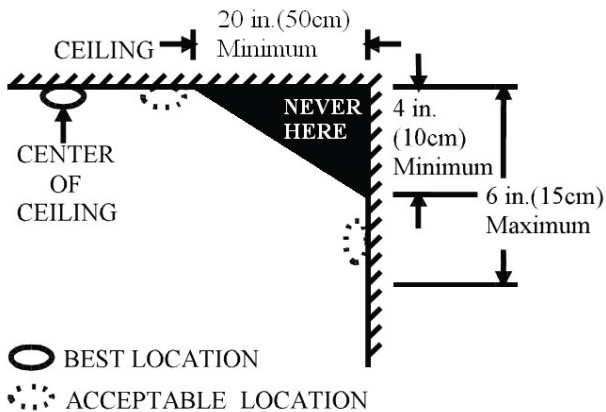


Figure 4 Recommended best and acceptable locations to mount smoke detectors

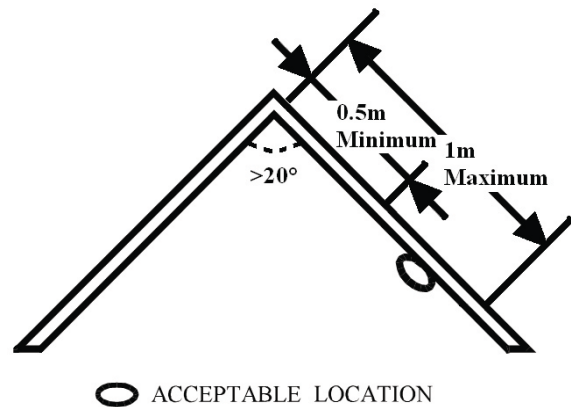


Figure 5 Recommended location to mount smoke detectors in rooms with sloped, gabled, or peaked ceiling

Locations Not To Install Detectors

Nuisance alarms take place when smoke detectors are installed where they will not work properly. To avoid nuisance alarms, do not install smoke detectors in the following situations:

- Combustion particles are the by-products of something that is burning. Thus, in or near areas where combustion particles are present you do not install the smoke detectors to avoid nuisance alarms, such as kitchens with few windows or poor ventilation, garages where there may be vehicle exhaust, near furnaces, hot water heaters, and space heaters.
- Do not install smoke detectors less than 20 feet (6 meters) away from places where combustion particles are normally present, like kitchens. If a 20-foot distance is not possible, e.g. in a mobile home, try to install the detector as far away from the combustion particles as possible, preferably on the wall. To prevent nuisance alarm detectors, provide good ventilation in such places.
- When air streams passing by kitchens, the way how an smoke detector can sense combustion particles in normal air-flow paths is graphically shown in Figure 6, which indicates the correct and incorrect smoke detector locations concerning this problem.
- In damp or very humid areas, or near bathrooms with showers. Moisture in humid air can enter the sensing chamber, then turns into droplets upon cooling, which can cause nuisance alarms. Install smokedetectors at least 10 feet (3 meters) away from bathrooms.
- In very dusty or dirty areas, dirt and dust can build up on the detector's sensing chamber, to make it overly sensitive. Additionally, dust or dirt can block openings to the sensing chamber and keep the detector from sensing smoke.
- Near fresh air vents or very drafty areas like air conditioners, heaters or fans, fresh air vents and drafts can drive smoke away from smoke detectors.
- In insect-infested areas. If insects enter an alarm's sensing chamber, they may cause a nuisance alarm. Where bugs are a problem, get rid of them before putting up an alarm.
- Near fluorescent lights, electrical "noise" from fluorescent lights may cause nuisance alarms. Install smoke detectors at least 5 feet (1.5 meters) from such lights.

WARNING: Never remove battery from Smoke detector to stop a nuisance alarm. Open a window or fan the air around the Smoke detector to get rid of the smoke. The alarm will turn itself off when the smoke is gone. If nuisance alarms persist, attempt to clean the Smoke detector as described in this User's Manual.

WARNING: Do not stand close to the smoke detector when the alarm is sounding. The alarm is loud in order to wake you in an emergency. Too much exposure to the horn at close range may be harmful to your hearing.

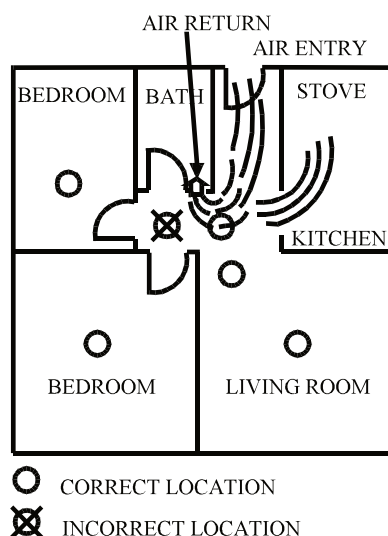


Figure 6 Recommended smoke detectors locations to avoid air streams with combustion particles

4 Installation

1. Check Signal Strength

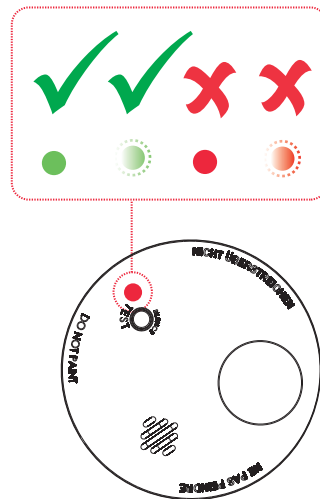
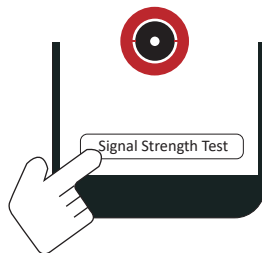
Enter the signal checking mode by operating on the control panel.

Strong Signal - Good for installation

Medium Signal - Ok for installation

Weak Signal - Not proper for installation

Lost Signal - Not proper for installation

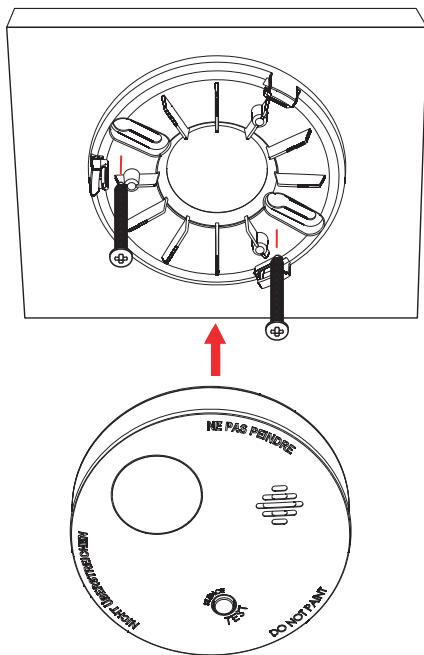


2. Install the Detector.

Secure the mounting plate on the wall with supplied screws.

Using the two screws and plastic wall plugs (all supplied), attach the bracket to the wall.

Line up the slot of the bracket and the smoke detector. Push the smoke detector onto the mounting bracket and turn it clockwise to fix it into place. Pull onward on the smoke detector to make sure it is securely attached to the mounting bracket.



CAUTION: This smoke detector comes with cover latches that will prevent the smoke detector cover from closing if battery is not installed. This tells you that the smoke detector will not work until a new battery is properly installed.

NOTE: Alarm horn will beep once with Green LED flashing 1 times after the detector is installed with battery and mounted with bracket 2 seconds. This means the smoke detector is working normally and also indicates that the battery is positioned properly. Close cover, and then press the test button. The horn should sound a loud, pulsating alarm. This means the unit is working properly.

5 Features

STANDBY MODE

Green LED flashing once 48 seconds means that smoke detector in Standby mode. When pressing the test button of smoke detector in standby mode, Red LED flashing once a second and temporal three tone, it means the smoke detector can be normally operated.

ALARM MODE

Smoke Alarm:

Red LED flashing 3 times and horn emit 3 tones every 4 second.

SILENCE FEATURE

The silence features can temporarily mute an alarm for up to 8 minutes. To use this feature, press test/silence button of smoke detector when it alarms. However, if the temperature is still at alarming level after 8 minutes of silence, the unit will re-alarm immediately.

HUSH FEATURE

The hush features can temporarily mute a warning of malfunction for up to 1 hour. To use this feature, when smoke detector occurs warning (malfunction), press test button can be mute 1 hour.

In hush warning press test button, the smoke detector back audible warning.

MALFUNCTION (ERROR) SIGNAL

If you hear “beep” with yellow LED flashing once every 48 seconds, it indicates that the detector doesn’t work properly, please have it repaired or serviced.
“Beep” 3 times with yellow LED flashing 1 time means that smoke trouble.
“Beep” 1 time with yellow LED flashing 1 time means that detector battery low voltage.

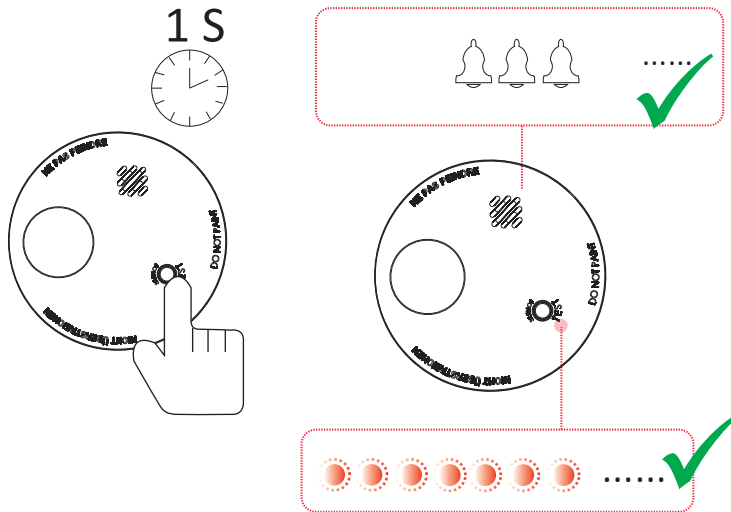
CLEAN ME AND LOW SENSITIVITY SIGNAL

In the case of Clean me and Low sensitive signals, please clean smoke chamber, if signal still, please have it repaired or serviced.
“Beep” 2 times with yellow LED flashing 2 times means that “Clean me”.
“Beep” 2 times with yellow LED flashing 1 time means that “Low sensitivity”.

LOW BATTERY WARNING SIGNAL

If the smoke detector horn begins to beep once every 48 seconds with yellow LED flashing, this signal means that the smoke detector’s battery is weak.

6 Test



Test the smoke detector weekly by pressing firmly on the test button with your finger for around 1 seconds until the horn sounds, the sound pattern is 3 tone, pause, and then 3 tone with red LED flashing continuously and rapidly. If the smoke detector “beeps” with yellow LED flashing in 48 seconds, it indicates the smoke detector is not working properly, it requires to be repaired or serviced.


WARNING: Never use an open flame of any kind to test your smoke detector. You may set fire to damage the alarm, as well as your home. The built-in test button accurately tests all functions as required by Underwriters’ Laboratories. They are the only correct ways to test the unit.

WARNING: When you are not testing the unit and the alarm horn sounds, this means the smoke detector has sensed high temperature. Be sure that the alarm horn is a warning of a possible serious situation, which requires your immediate attention.

The alarm could be caused by a nuisance situation. Cooking smoke or a dusty furnace, sometimes called “friendly fires” can cause the alarm to sound. If this happens, open a window or fan the air to remove the smoke or dust. The alarm will turn off as soon as the air is completely clear.

NOTE: Do not disconnect the power or remove the battery from the smoke detector. This will remove your protection from fires.

7 Set Up with App

You can view the device status including temperature, signal intensity, battery level, lid, etc., on the device page. Tap the  button to enter the settings page.

8 Operation Caution and Device Maintenance

- All the electronic operation should be strictly compliance with the electrical safety regulations, fire prevention regulations and other related regulations in your local region.
 - Do not drop the device or subject it to physical shock, and do not expose it to high electromagnetism radiation. Avoid the equipment installation on vibrations surface or places subject to shock (ignorance can cause equipment damage).
 - Please make sure that the power has been disconnected before you wire, install or dismantle the device.
 - If smoke, odors or noise rise from the device, turn off the power at once and unplug the power cable, and then please contact the service center.
 - Do not drop the device or subject it to physical shock, and do not expose it to high electromagnetism radiation. Avoid the equipment installation on vibrations surface or places subject to shock (ignorance can cause equipment damage).
 - Do not place the device in extremely hot (refer to the specification of the device for the detailed operation temperature), cold, dusty or damp locations, and do not expose it to high electromagnetic radiation.
 - The device for indoor use shall be kept from rain and moisture.
- Exposing the equipment to direct sun light, low ventilation or heat source such as heater or radiator is forbidden (ignorance can cause fire danger).
- Do not aim the device at the sun or extra bright places. A blooming or smear may occur otherwise (which is not a malfunction however), and affecting the endurance of sensor at the same time.
 - Improper use or replacement of the battery may result in hazard of explosion. Replace with the same or equivalent type only. Dispose of used batteries according to the instructions provided by the battery manufacturer.
 - Do not expose the device to the corrosive gas. Otherwise the equipment damage may occur.
 - Do not expose the device to the explosive situation.
 - Open the cover and vacuum the dust off the Smoke detector’s sensing chamber at least once a month.
- Remove battery before cleaning. To clean smoke detector, use soft brush attachment to your vacuum. Carefully remove any dust on smoke detector components, especially on the openings of the sensing chamber. Replace battery after cleaning. Test the smoke detector to make sure battery is working correctly. Never use water, cleaners as they may damage the unit.

8 Specification

Detection method	Chamber With Photoelectric Sensor
Tamper protection	Rear
Environment temperature indicator	Support
Signal strength indicator	Support
self-health check	Support
alarm sound interlink	Support
Power switch	Power Up Enrolling
LED indicator	Red (Alarm)
Buzzer	≥ 85dB @ 3 m
Transmission technology	Two-Way RF Wireless
Transmission frequency	433/868 MHz
Transmission security	AES-128 Encryption
Transmission range(free space)	WB: 1 Km WE: 1.6 Km
Enrolling method	Power up, Remote ID, QR Code
Standard battery life	10 years for standalone sensor 5 years for RF wireless
Power supply	Battery Powered
Battery type	Replaceable CR123A x 1 for RF Wireless
Typical voltage	3V
Operation temperature	-10 °C to 50 °C (14 °F to 122 °F)(0~49 °C certified)
Storage temperature	-20 °C to 60 °C (-4 °F to 140 °F)
Operation humidity	5% to 90%
Dimension (D × D)	φ120 × 48 mm
Weight	190.5 g
Mounting method	Ceiling
Application scenario	Indoor