

VDA-PLEN-DOME In-ceiling Housing for Plenums

www.boschsecurity.com



BOSCH

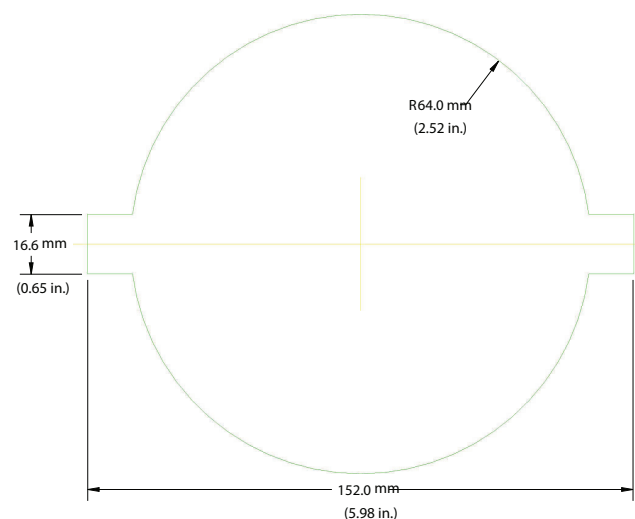
Invented for life



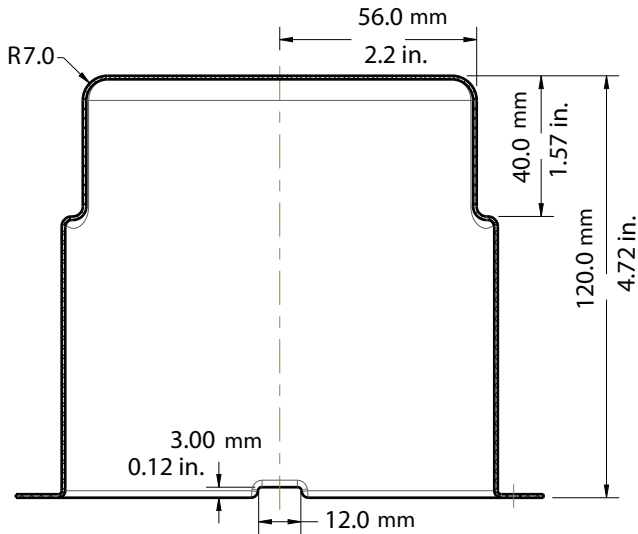
- ▶ Suitable for use in air-handling spaces
- ▶ Separate support kit available for drop ceiling applications

The FLEXIDOME In-ceiling Housing for Plenums kit is plenum-rated per 2008 NEC section 300.22 (c) (3). This kit is suitable for installing dome cameras flush in a ceiling.

Installation/configuration notes



Ceiling hole cut-out dimensions



Housing Dimensions

Parts included

The kit contains the following parts necessary to install a FLEXIDOME camera in-ceiling. Note that a VGA-IC-SP mounting support kit (sold separately) is also recommended when mounting in drop ceiling applications; see the Installation Manual for details.

Quantity Supplied	Description
1	Backbox, formed 7490
2	Toggle bolt: #6-32x3"
4	Screw: #10-24x3.8, thread form
1	Cover, FLEXIDOME ceiling plate

Technical specifications

Construction

Dimensions (W x H x L)	(box) 190 mm x 190 mm x 190 mm (7.48 in. x 7.48 in. x 7.48 in.)
Weight	Net: 0.329 kg (0.72 lb) Gross: 0.862 kg (1.9 lb)
Material	Aluminum
Mounting	In-ceiling

Ordering information

VDA-PLEN-DOME In-ceiling Housing for Plenums

In-ceiling housing for plenums kit for several series of Bosch dome cameras

Order number **VDA-PLEN-DOME**

Represented by:

Americas:

Bosch Security Systems, Inc.
130 Perinton Parkway
Fairport, New York, 14450, USA
Phone: +1 800 289 0096
Fax: +1 585 223 9180
security.sales@us.bosch.com
www.boschsecurity.us

Europe, Middle East, Africa:

Bosch Security Systems B.V.
P.O. Box 80002
5617 BA Eindhoven, The Netherlands
Phone: + 31 40 2577 284
Fax: +31 40 2577 330
emea.securitysystems@bosch.com
www.boschsecurity.com

Asia-Pacific:

Robert Bosch (SEA) Pte Ltd, Security
Systems
11 Bishan Street 21
Singapore 573943
Phone: +65 6571 2808
Fax: +65 6571 2699
apr.securitysystems@bosch.com
www.boschsecurity.asia

China:

Bosch (Shanghai) Security Systems Ltd.
203 Building, No. 333 Fuquan Road
North IBP
Changning District, Shanghai
200335 China
Phone +86 21 22181111
Fax: +86 21 22182398
www.boschsecurity.com.cn

America Latina:

Robert Bosch Ltda Security Systems Division
Via Anhanguera, Km 98
CEP 13065-900
Campinas, Sao Paulo, Brazil
Phone: +55 19 2103 2860
Fax: +55 19 2103 2862
latam.boschsecurity@bosch.com
www.boschsecurity.com